



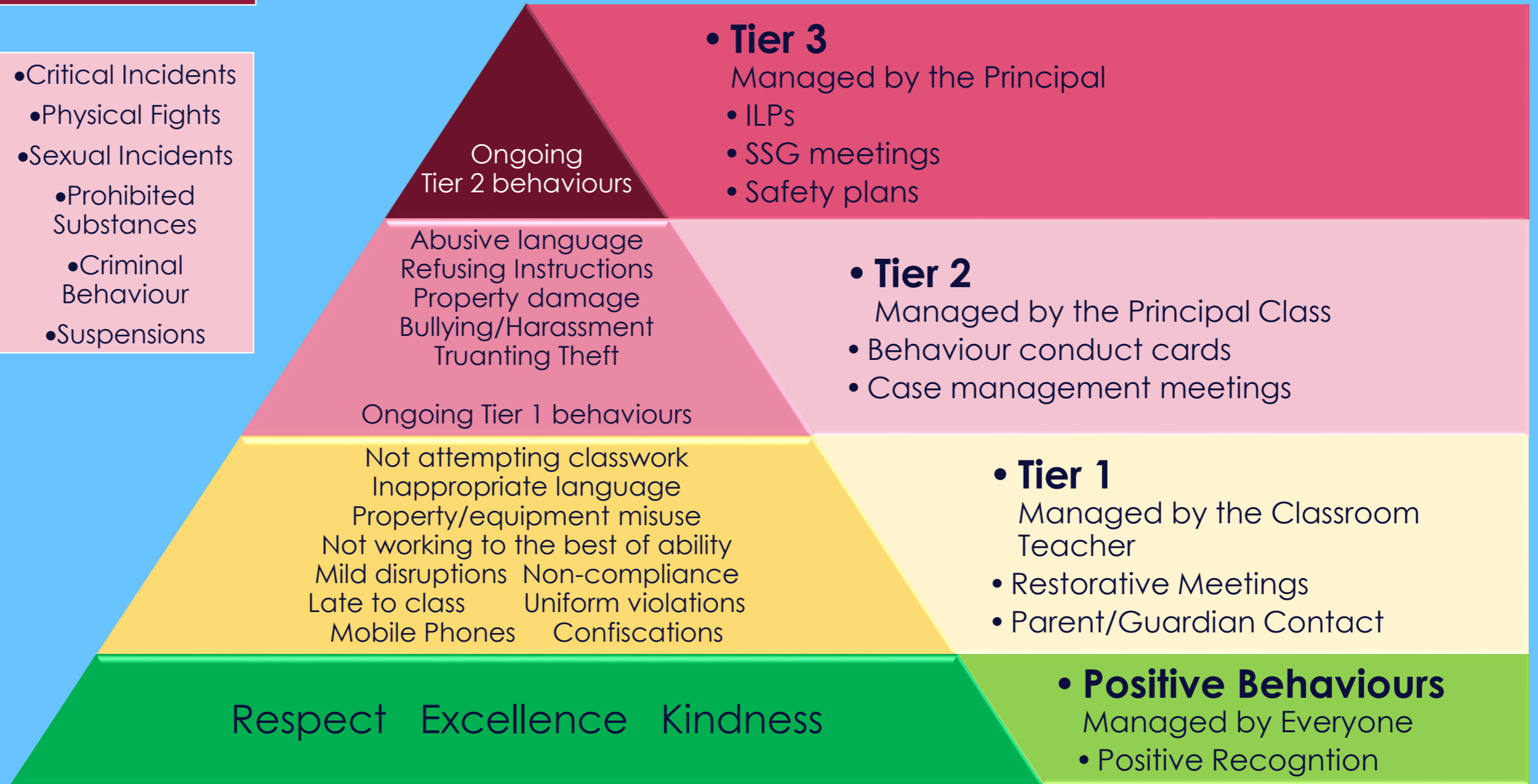
# Mirripoa Primary School Behaviour Management Tiers

## Wellbeing Team

- Mental Health Concerns
  - Living Arrangement Concerns
- Financial Hardship
  - Missing Equipment and Uniform
- External Services
- Group Programs
  - Referrals to Network

## Principal Class

- Critical Incidents
  - Physical Fights
  - Sexual Incidents
    - Prohibited Substances
    - Criminal Behaviour
  - Suspensions



### Managing disruptive behaviours in class

- Inappropriate behaviours acted on by teacher
- Student reminded of the appropriate behaviours
- Student relocated in the classroom
- Student exited to buddy classroom with work

### Following a classroom exit

- Incident recorded on Sentral by teacher
- Restorative conversation organised with the student by teacher, with principal class available for support
- Student to walk with yard duty teacher
- Student maybe given a lunchtime detention
- Contact made with home by teacher and family informed of the incident and consequences

### Ongoing Issues or Severe incidents

- ILP or Behaviour Support Plan followed by teacher
- Appropriate consequence issued by Principal/AP
- Case management process started by Principal/AP
- Wellbeing referral initiated
- SSG organised by Principal, Wellbeing, teachers, student and parent/guardian.